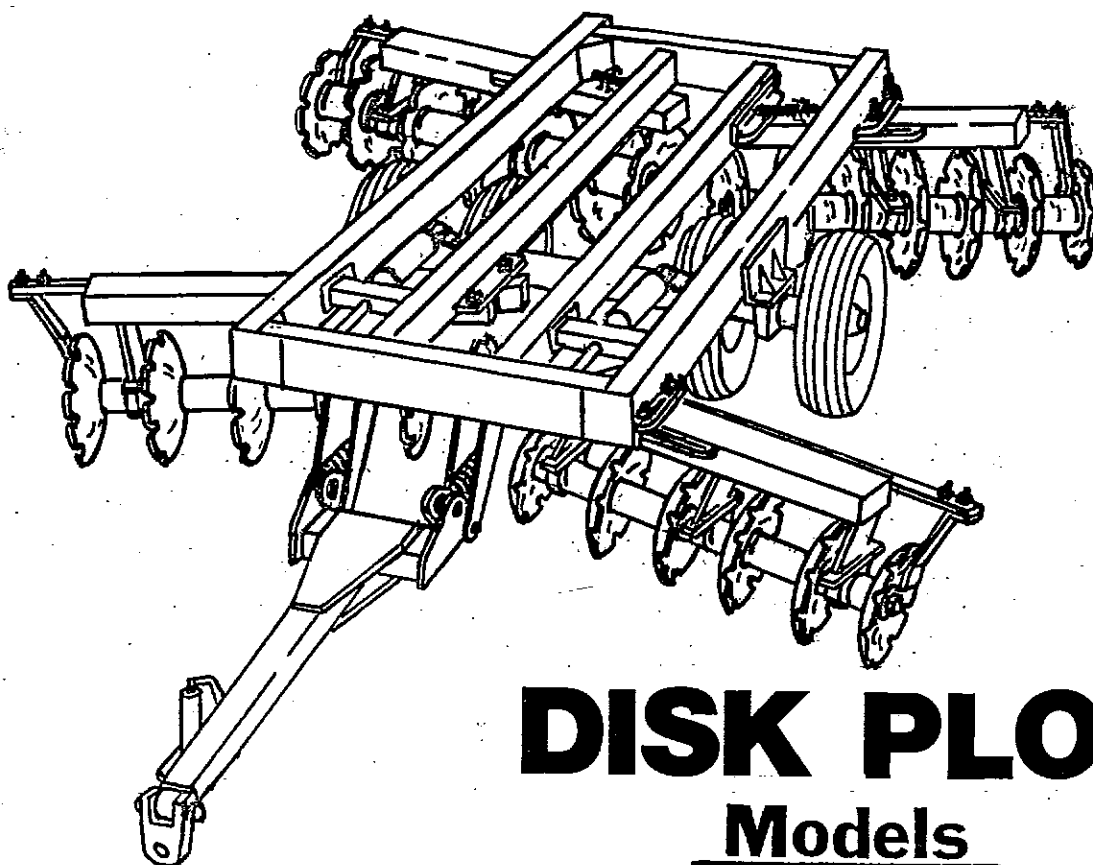


**ARTS-WAY**

**ASSEMBLY, OPERATION,  
& PARTS MANUAL**



**DISK PLOW**

Models

**950, 1400, & 1600**

MODEL 1400 SHOWN ABOVE

**ARTS-WAY**

Arts-Way Mfg. Co., Inc. - Highway 9 West - Armstrong, IA 50514 - (712) 864-3131

220700 (C)

# TO THE OWNER

This Arts-Way unit is another one of the fine products made and the purpose of this manual is to assist you in realizing the benefits you anticipated when you purchased this unit. Many people have contributed to the production of this product. They all have an interest in its successful performance and we are providing this manual to give you the benefit of the experience we have gained through years of building and testing this equipment. The way you operate and the care you give this unit will have much to do with the successful performance of this unit. This operators manual has been carefully prepared and illustrated to make it as easy as possible for you in the operation of your unit. It will pay you to read the entire manual carefully and familiarize yourself with all operations "before operating" this unit. Keep this manual handy for reference. We will be glad to answer any questions you may have. For further information call or write Arts-Way Manufacturing Company, Inc. (712) 864-3131, Armstrong, IA 50514

## LIMITED WARRANTY

The ART'S-WAY MANUFACTURING COMPANY, INCORPORATED warrants products sold by it to be free from defects in material and workmanship for a period of one (1) YEAR after the date of delivery to the first purchaser subject to the following conditions:

- (1) ART'S-WAY MANUFACTURING COMPANY, INCORPORATED'S obligation and liability under this warranty is to repair or replace at the company's option, any parts which upon manufacture were defective in material or workmanship.
- (2) All parts and repairs under this warranty shall be supplied at an authorized ART'S-WAY MANUFACTURING COMPANY, INCORPORATED dealer or at the factory at the option of ART'S-WAY MANUFACTURING COMPANY, INCORPORATED.
- (3) ART'S-WAY MANUFACTURING COMPANY, INCORPORATED'S warranty does not extend to parts and elements not manufactured by ART'S-WAY MANUFACTURING COMPANY, INCORPORATED and which carry the warranty of the other manufacturer.
- (4) Transportation or shipping to an authorized dealer for necessary repairs is at the expense of the purchaser.
- (5) ART'S-WAY MANUFACTURING COMPANY, INCORPORATED MAKES NO OTHER WARRANTY EXPRESS OR IMPLIED AND MAKES NO WARRANTY OF MERCHANTABILITY OR FITNESS FOR ANY PARTICULAR PURPOSE BEYOND THAT EXPRESSLY STATED IN THIS WARRANTY. ART'S-WAY MANUFACTURING COMPANY, INCORPORATED'S LIABILITY IS LIMITED TO THE TERMS SET FORTH IN THIS WARRANTY AND DOES NOT INCLUDE ANY LIABILITY FOR DIRECT, INDIRECT, INCIDENTAL OR CONSEQUENTIAL DAMAGES OR EXPENSE OF DELAY AND THE COMPANY'S LIABILITY IS LIMITED TO REPAIR OR REPLACEMENT OF DEFECTIVE PARTS AS SET FORTH HEREIN IN THE WARRANTY.
- (6) Any improper use, including operation after discovery of defective or worn parts, operation beyond rated capacity, substitution or parts not approved by ART'S-WAY MANUFACTURING COMPANY, INCORPORATED, or any alteration or repair by other than an authorized ART'S-WAY MANUFACTURING COMPANY, INCORPORATED dealer which affects the product materially and adversely, shall void this warranty.
- (7) No dealer, employee or representative is authorized to change this warranty in any way or grant any other warranty unless such change is made in writing and signed by an officer of ART'S-WAY MANUFACTURING COMPANY, INCORPORATED at its home office.
- (8) Some states do not allow limitations on how long an implied warranty lasts or exclusions of or limitations on relief such as incidental or consequential damages so the above limitations or exclusions may not apply to you. This warranty gives you specific legal rights and you may have other rights which vary from state to state.

# WORK SAFELY-FOLLOW THESE RULES



INSTRUCTIONS GIVEN WITH THIS SYMBOL ARE FOR PERSONAL SAFETY. BE SURE YOU AND YOUR WORKERS FOLLOW THEM.

A CAREFUL OPERATOR IS THE BEST INSURANCE AGAINST AN ACCIDENT



**CAUTION!** Before handling ANY equipment, READ the OPERATOR'S MANUAL.

Misuse or modification of the machine can cause:

- mechanical breakdown,
- property damage,
- injury or death.

Always use proper safety precaution. Tell your workers how to work safely.

## BEFORE OPERATING

Do not actuate hydraulic cylinders until hitched to tractor.

Before servicing, lower to ground or install transport cylinder lock sleeves.

After servicing, be sure that all tools, parts, or servicing equipment are removed from the machine.

Make sure that there is no one near the machine before starting it.

## DURING OPERATION

No riders. Tractor operator must use seat belt. Keep children and bystanders away from the machine in operation.

Hydraulic fluid escaping under pressure can have enough force to penetrate the skin. Hydraulic fluid may also infect a minor cut or opening in the skin. If injured by escaping fluid, see a doctor at once. Serious infection or reaction can result if medical treatment is not given immediately. Make sure all connections are tight and that hoses and lines are in good condition before applying pressure to the system. Relieve all pressure before disconnecting the lines or performing other work on the hydraulic system. To find a leak under pressure use a small piece of cardboard or wood: Never use hands.

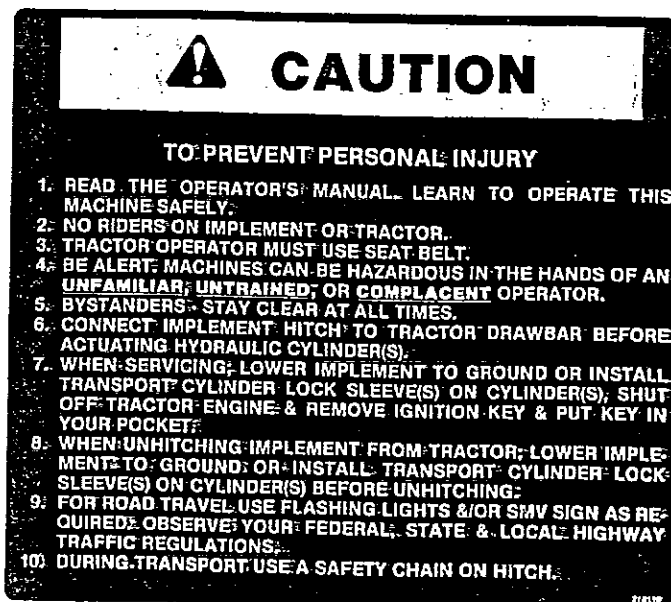
Observe your federal, state and local traffic regulations when transporting. During transport use a safety chain on hitch.

# SAFETY DECALS

Located at strategic points on this machine are safety decals. These decals warn you of potential danger if the warning on the decals are not followed.



"WARNING" - BEFORE WORKING UNDER IMPLEMENT. PART NO. 218100



"CAUTION" - GENERAL PRECAUTION, 10 ITEMS. PART NO. 218110

# Accidents can be prevented

A large number of accidents can be prevented by the operator anticipating the result before it happens and doing something about it. No power-driven equipment can be safer than the man at the controls.

The manufacturer is striving to make the equipment safe, but one careless act by the operator can void all such efforts.

The best kind of a safety device is a careful operator. **BE THAT KIND OF AN OPERATOR**, as no accident-prevention program can be a success without the co-operation of the operator of the equipment.

## INFORMATION FOR ORDERING PARTS

OWNERS NAME \_\_\_\_\_  
ADDRESS \_\_\_\_\_  
DEALERS NAME \_\_\_\_\_  
ADDRESS \_\_\_\_\_  
SERIAL NUMBER \_\_\_\_\_  
DATE PURCHASED \_\_\_\_\_

*A Careful Operator*  
IS THE BEST INSURANCE  
AGAINST AN ACCIDENT

—National Safety Council.

Arts-Way reserves the right to make changes or add improvements to its products at any time without incurring any obligation to make such changes to products manufactured previously. Arts-Way, or its dealers, accept no responsibility for variations which may be evident in the actual specifications of its products and the statements and descriptions contained in this publication.

# TABLE OF CONTENTS

## 1400 DISK PLOW MANUAL

ASSEMBLY . . . . .	6 - 8
OPERATION . . . . .	9 - 10
LUBRICATION . . . . .	10
PARTS SECTION . . . . .	11 - 19

### INTRODUCTION

Read ENTIRE manual and instructions.  
Following all safe operating  
procedures. Keep all safety devices  
in place.

The warranty for this disk plow appears on page 1 of this manual. Record the model and serial number of your disk plow in the space provided on page 4.

The warranty registration form in the front of this book must be completed and returned to the factory in order to establish proper WARRANTY.

Whenever you correspond with the company, distributor or dealer concerning this machine, please specify model number and serial number.

The terms front, rear, right side and left side are defined as standing behind the machine and facing in the direction of forward travel.

The safe operation of the machines are the responsibility of the operator. The operator should be familiar with the disk plow and tractor and all safety practices before starting operation.

**NOTE:** In the set-up and all service procedures keep safety in mind. Use adequate blocking to prevent personal injury. Keep children away. Injury can occur from lifting too heavy an object or from a falling member if it is not properly supported or blocked.

This Arts-Way Disk Plow has been designed to improve your primary tillage operation. With proper operation and adjustments it will provide top quality trouble free primary tillage. Once adjusted for your tractor, field conditions, and desired plowing depth, minimal adjustment is required.

# ASSEMBLY INSTRUCTIONS



**CAUTION:** This implement has very heavy components, make sure to securely block and have adequate lifting equipment while assembling.

1. Hitch the Disk Plow to a tractor using the maximum diameter hitch pin possible. Install the proper hydraulic couplings on hoses and couple to the tractor hydraulic outlets.

**Note:** The Model 950 has two hydraulic circuits, a cylinder is mounted in the hitch to allow movement from side to side so the tire tracks are always covered.

Cycle lift cylinder(s) (and hitch swing cylinder on 950) several times. See figure 1. With the Disk Plow in the raised position install the U-shaped transport lock sleeve(s) (painted yellow) on the cylinder rod(s) of hydraulic cylinder(s). Make sure the transport lock sleeve(s) are on both cylinders of the 1400 and 1600. At this time snap a set of 5 stop collars onto the square tube(s) directly to the front of the lift cylinder(s).

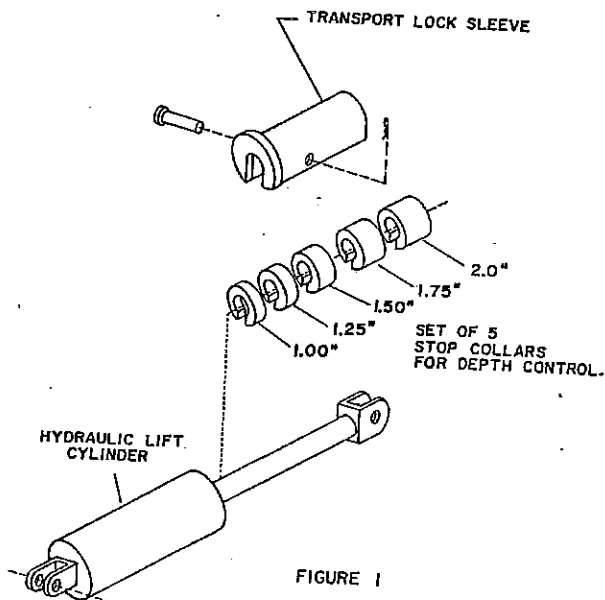


FIGURE 1

2. MODEL 1400 and 1600: Install two spindle and hub assemblies into the tubes of the carriage to the outer positions. Secure with 5/8" x 4-1/2" hex head cap screw, lock washer and nut. Install wheel and tire assemblies onto the hubs with 9/16" wheel nuts.

MODEL 950: When shipped, the spindle is installed to the inside, this must be moved to the outside. Raise frame, one side at a time, making sure it is securely blocked. Remove the 5/8" x 4-1/2" hex head cap screw holding the spindle into position, remove spindle hub, and wheel and tire, then re-install to the outer position.

3. See figure 2. Two spring assemblies on the Model 1400 and 1600; one spring assembly on the Model 950. Level the frame in the raised position by adjusting the nuts at front location "A".

**NOTE:** These nuts can be moved easier by backing off nuts at rear location B.

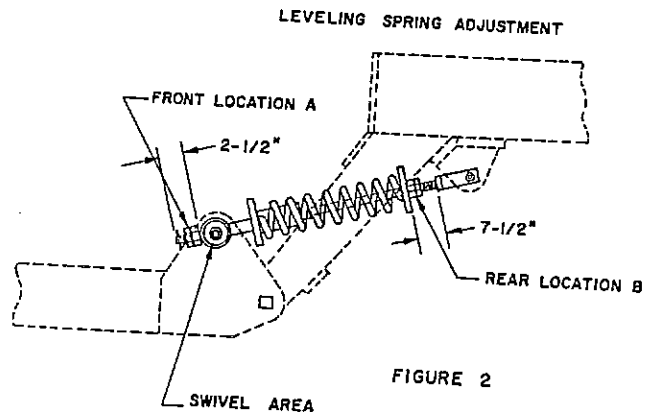


FIGURE 2

# ASSEMBLY INSTRUCTIONS

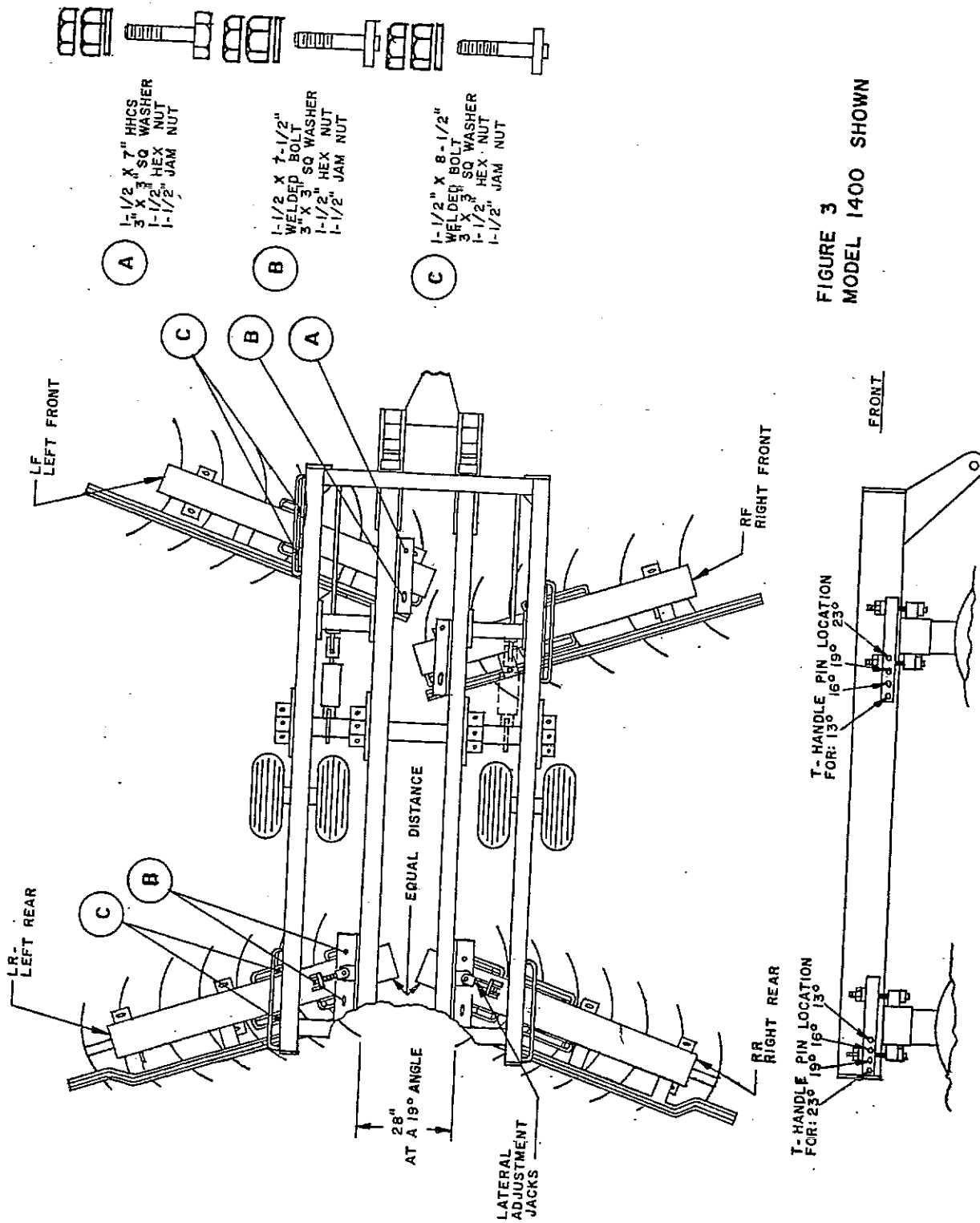


FIGURE 3  
MODEL 1400 SHOWN



## ASSEMBLY INSTRUCTIONS

Nuts at rear location "B" will also have to be moved to bring nuts at front location "A" back against swivel area.

If the tractor to be used for field operation is not being used set nuts at location "A" to 2-1/2" dimension shown.

Set the nuts at rear location "B" to the 7-1/2" dimension shown. This setting adjusts the level of the frame in the running position.

**Note:** It may be desirable to use these adjustments to set frame height for installation of gangs.

4. See figure 3. Note gang identification RF, LF, RR & LR stamped on the end of each gang assembly as shown. Identify gang assemblies and note locations.

5. Install the front gang assemblies with fasteners shown in figure 3. Do not install 1-1/2" jam nut or tighten until the gang angle is properly set. A 19 degree gang angle is suggested for the initial setting. A 1" diameter T-handle pin and hairpin cotter is provided for installation into locating holes of the frame. For the front gang angle of 19 degrees, place the T-handle pin into the third hole from the rear, making sure gang hanger bolt is ahead of this position. Note other angles if desired. Move the gang back so the gang hanger bolt is tight against the T-handle pin. Gangs can be moved by lowering blades to the ground and moving forward or backward as desired. For shop assembly a come-along type winch may be used.

Tighten all gang hanger bolts and install 1-1/2" jam nuts when gangs are properly located.

**NOTE:** Hitch weight becomes very heavy with only front gangs installed.

6. Install the rear gang assemblies with fasteners as shown in figure 3. Do not install 1-1/2" jam nuts or tighten until the gang angle and the lateral adjustment are properly set. Install the lateral adjustment jacks, see figures 3 & 4. The 19 degree suggested gang angle for the rear gangs is achieved by placing the T-handle pin in the third hole from the front, making sure the gang hanger bolt is ahead of this position. Note other angles if desired. Move the gang back so gang hanger bolt is tight against the T-handle pin. Rear gangs must also be adjusted laterally (in and out) using the lateral adjustment jacks. Make sure gangs are centered on the frame using the same relative dimension from side to side (See suggested on figure 3). For the 19 degree gang angle the 28" dimension at the closest point of the disk blades is suggested for approximately 5-1/2 MPH travel speed. This adjustment will very likely have to be changed for the specific depth and soil conditions.

Recheck to make sure gang hanger bolt is tight against T-handle pin. Tighten gang hanger bolts and install 1-1/2" jam nuts.

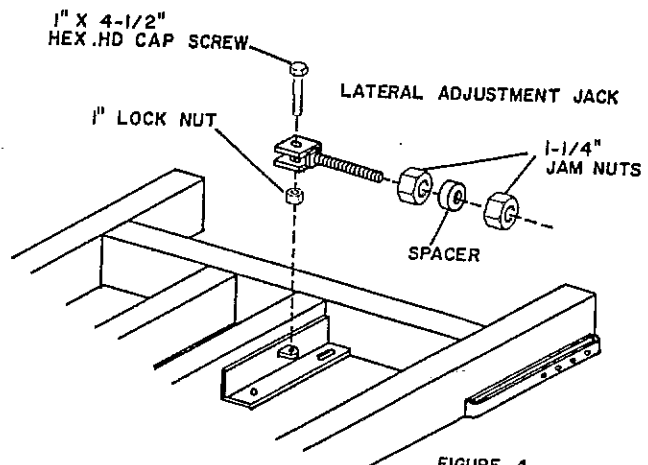


FIGURE 4

# GENERAL OPERATING INSTRUCTIONS

## INITIAL FIELD OPERATION

The disk blades have a heavy coat of paint and do not penetrate to the maximum until they become shiny and scoured. It is necessary to operate the Disk Plow for 10 or 15 acres to get good shine on the disk blades.

With the Disk Plow adjusted as shown in the assembly instructions, procede as follows:

1. Install stop collars (see figure 1) on the lift cylinder(s) for a length of 6" (make sure exactly the same length is used on both cylinders of the 1400 and 1600).

**NOTE:** It is important that the tires contact the ground or other adjustments become more difficult.

2. Lower the Disk Plow into the ground and determine the speed at which you can travel. If the depth is not what is desired and the tires are solid on the ground, remove or add length to the cylinder stop collars. If depth is slightly shallow and will not go deeper continue running and depth will increase as blades become shiny. If a much deeper depth is desired it may be necessary to increase gang angle to 23 degrees for additional penetration.

3. Observe the depth of front and rear gangs. See figure 2. If the front gangs need to go deeper, loosen nuts at rear location B (7-1/2" dimension decreased). If the front gangs are too deep, tighten nut at rear location B (7-1/2" dimension increased).

4. Observe for ridge or furrow in the center. If adjustment is necessary loosen eight gang hanger bolts and move rear gangs in or out with lateral adjustment jacks. See figures 3 & 4. Moving gangs out eliminates a ridge; moving gangs in eliminates a furrow.

5. Run Disk Plow for 10 - 15 acres. Observe all aspects of operation and adjust as desired or needed.

## GENERAL OPERATION

The only adjustments needed are:

1. Disk leveling springs.
2. Installation of depth control segments on lift cylinder.



**CAUTION:** Exact same length must be installed on each cylinder of 1400 and 1600.

3. Gang angle
4. Lateral (in or out) positions of the rear gangs.
5. Scraper blades as wear occurs.

## TIRES

Keep the 11.00 x 16, 12 ply tires properly inflated to 40 PSI. Unequal pressure or a low tire will result in improper depth control.

## FRAME LEVELING

The frame must be leveled in the transport (raised) and in the working (lowered) position. One spring on the 950 and two springs on the 1400 and 1600.



**CAUTION:** To prevent personal injury do not work under the Disk Plow unless lock sleeve(s) are installed on the lift cylinder(s) or the Disk Plow is lowered to the ground.

## GENERAL OPERATING INSTRUCTIONS

To level the frame in the transport (raised) position. Make sure the tractor and Disk Plow are on level ground, fully extend the lift cylinder(s). See figure 2. Using the 2-1/4" open end wrench provided with the Disk Plow unlock the front hex nuts at position "A" on the spring and shaft and reposition until the frame is the same distance from the ground at the front and rear. The tension can be taken off these nuts by lowering the disk plow to the ground. The front of the frame is lowered by tightening (turning clockwise). These nuts must be positioned so they are equal distance from the end of the threaded shaft on the 1400 and 1600. Be sure to retighten the jam nut.

To level the frame in the working (lowered) position, adjust the hex nuts at rear position "B". To raise the front of the frame tighten (turn clockwise) these hex nuts, compressing the spring. To lower the front of the frame loosen (turn counter clockwise) these hex nuts, loosening the spring. Be sure to keep nuts even from side to side on the 1400 and 1600. Retighten the jam nut when adjustments are complete.

This adjustment may need to be repeated when the disk blades become shiny and when the depth is changed.

### STORAGE FOR DEPTH CONTROL STOP COLLARS & TRANSPORT LOCK SLEEVE(S)

Installed for storage only, on the square tube to the front of the lift cylinder(s) are stop collars for depth control and lock sleeve(s) for transporting the Disk Plow.

### DEPTH CONTROL

To set the depth of the Disk Plow, stop collars of 1", 1-1/4", 1-1/2", 1-3/4" & 2" lengths are provided for

lift cylinder(s). These may be removed from the storage tube and installed on the lift cylinder rod by pulling on the loop and then expanding back over the cylinder rod.

To set the depth start by installing 5-1/2" to 6" total length of stop collars, then remove or add length as desired, to obtain depth.

**NOTE:** Make absolutely sure that the same length collars are installed on each cylinder of the 1400 and 1600.

It is very important that the depth be controlled by the tires contacting the ground. If tires are raised off the ground other settings do not have the proper result.

### LATERAL ADJUSTMENT

If the Disk Plow is leaving a ridge or furrow in the center this can be eliminated by adjusting the lateral spacing of the REAR gangs. Move the gangs further apart to eliminate a ridge and closer together to close in a furrow. Before moving the gangs make sure the frame is level, blades are well polished, and depth and speed are as desired. Loosen the gang support bolts for both rear gangs, use the lateral adjustment jacks to move the gangs further apart or closer; move each side the same distance. Tighten the gang support bolts. Tighten the nuts on the lateral adjustment jacks. See also assembly instructions.

# GENERAL OPERATING INSTRUCTIONS

## MODEL 950 SWINGING HITCH

The Model 950 Disk Plow is equipped with a hydraulic swinging hitch. This hitch allows the Disk Plow to be moved to either side of the tractor and cover the tractor tires toward the worked ground. This will allow moving the hitch on each end so the field does not have to be worked in "lands". Swing the hitch as desired preferably when the Disk Plow is out of the ground.

## TRANSPORTING

Before transporting, raise the Disk Plow, remove lock sleeve(s) from storage position(s) and install onto the rods of the lift cylinders.

**NOTE:** Both lock sleeves must be installed on the 1400 and 1600.

Retract the lift cylinders slightly to allow the load to be transferred to the lock sleeves.

Before transporting:

1. Install the lock sleeve(s) as described above.
2. Be sure to use a safety chain when transporting on public roads.
3. Be sure reflectors are clean and visible.
4. Be sure to comply with your state and local laws governing movement of equipment on public roads.
5. Transport only with a tractor of proper size for field operation.

## WHILE TRANSPORTING

1. Transport at a maximum speed of 20 MPH.
2. Be sure to comply with your state and local laws governing movement of equipment on public roads.

# LUBRICATION

## LUBRICATION



**CAUTION:** To prevent personal injury do not work under the Disk Plow unless lock sleeve(s) are installed on the lift cylinder(s) or the Disk Plow is lowered to the ground.

Use SAE No. 2 Multi-Purpose Lithium Grease,

Wipe dirt from grease fittings before lubricating. Review machine for loose bolts while lubricating.

### Lubricate daily or after every 10 hours of operation:

1. Hitch swivel: One lubrication fitting
2. Pivot tube of under-carriage: Four lubrication fittings on Models 1400 and 1600, three fittings on Model 950. Lubricate in both raised and lowered positions.
3. Leveling spring area: Oil slide and pivot areas.
4. Hitch pivot points: Oil two rear and front pins.
5. On Model 950 only, three lubrication fittings on swinging hitch pivot.

### Lubricate after every 100 hours or 1000 acres of operation:

1. Gang bearings: Lubrication fittings located on the pillow block bearings on the disk blade shaft. Sufficient grease to flush out old grease and dirt.
2. Wheel hub bearings: Raise wheels off ground and check for any looseness. Remove hub cap and re-tension tapered bearings if necessary.

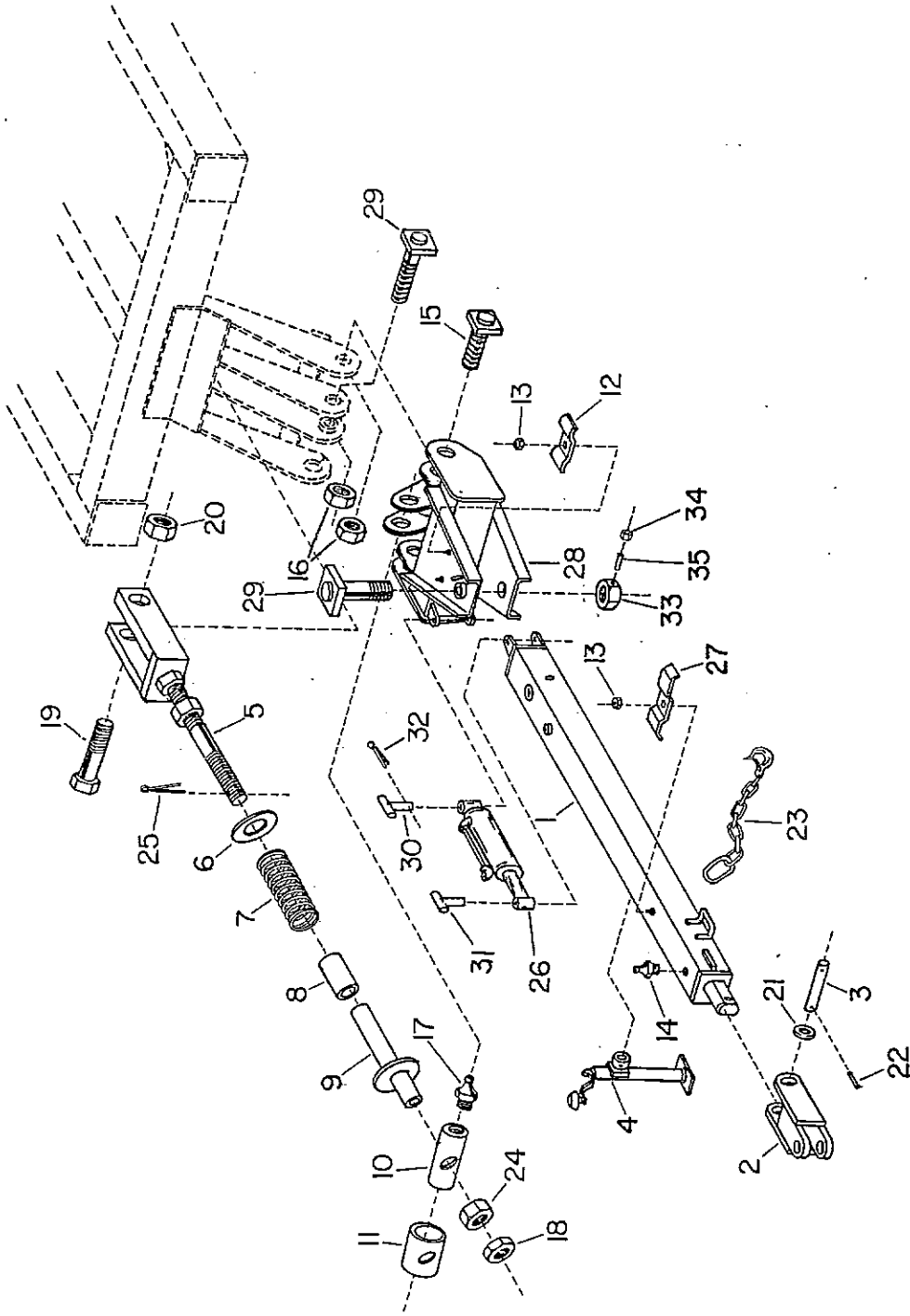
### Periodic:

1. Wheel hub bearings: Repack wheel hub bearings after every 200 hours of operation.

## SEASONAL STORAGE

Coat blades and cylinder rods with grease. Store in a dry place with blades resting on boards, do not let blades penetrate the ground.

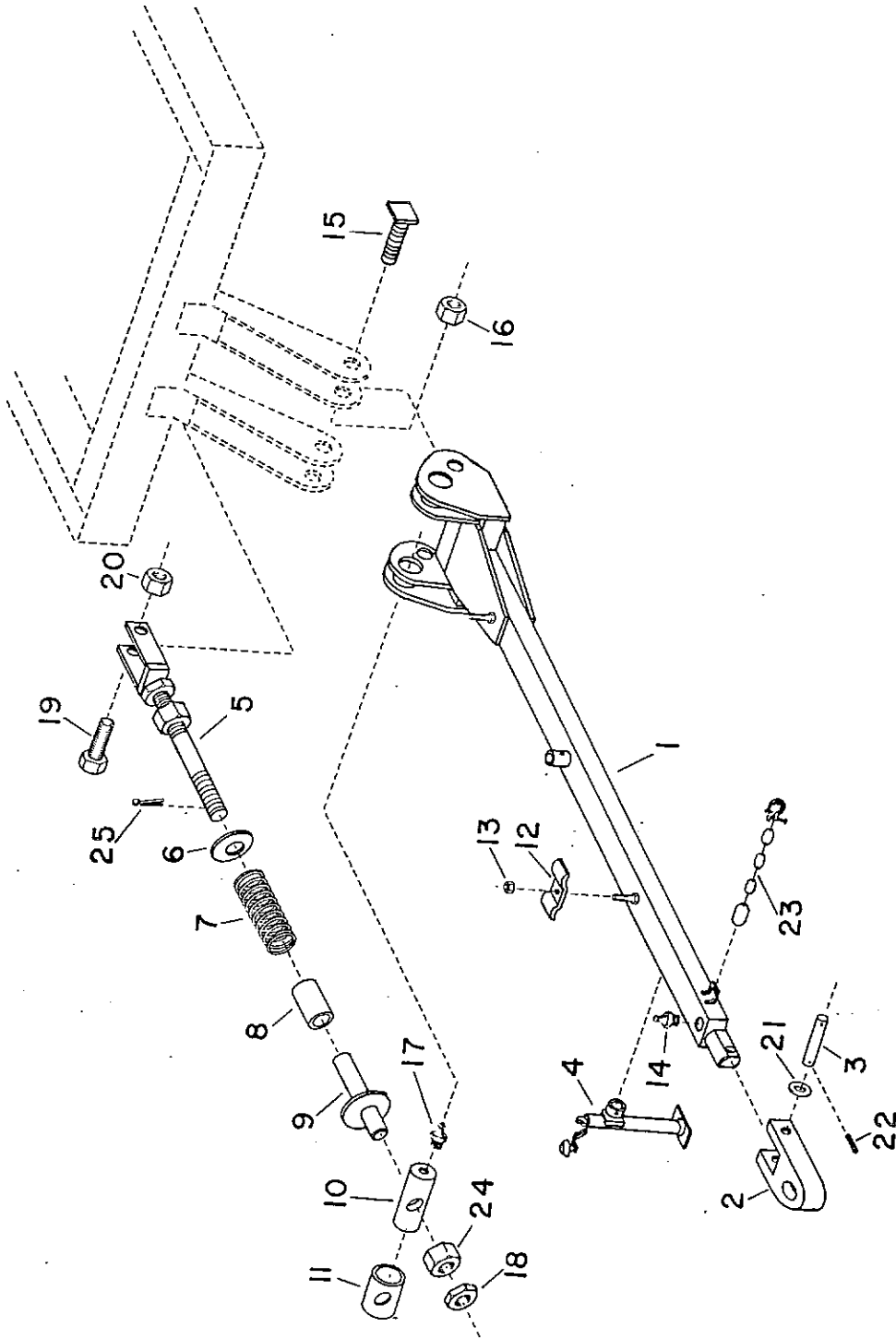
MODEL 950  
HITCH AND LEVELING ASSEMBLY



**MODEL 950  
HITCH AND LEVELING ASSEMBLY**

KEY	PART NO.	QTY.	DESCRIPTION
1	TG0227	1	TUBE WELDMNT, HITCH LONG
2	TG0104	1	HITCH, CLEVELIS WELDMNT
3	TG0056	1	PIN, HITCH SWIVEL
4	TG0665	1	JACK, HITCH
5	TG0255	1	ROD & YOKE WELDMNT, SPRING
6	TG0259	1	WASHER STOP, HITCH SPRING
7	TG0252	1	SPRING, COMPRESSION
8	TG0256	1	BUSHING, ADJUSTING ARM
9	TG0260	1	STOP WELDMNT, SPRING
10	TG0270	1	PIN, HITCH ARM SPRING SWIVEL
11	TG0271	1	SLEEVE, HITCH ARM SPRING SWIVEL
12	109970	2	CLIP, DOUBLE HOSE
13	E552044	-	NUT, 3/8" HEX LOCK
14	033570	-	FITTING, LONG 1/8"-27 NPT LUBE
15	TG0278	-	BOLT, 1-1/2" x 6-3/4" WELDED
16	TG0674	-	NUT, 1-1/2" HEX LOCK
17	013170	-	FITTING, 1/8"-27 NPT LUBE
18	TG0677	-	NUT, 1-1/2" HEX JAM
19	TG0672	-	BOLT, 1-1/4" x 4" HHCS
20	TG0675	-	NUT, 1-1/4" HEX LOCK
21	R61502	-	WASHER, 1-1/2" FLAT
22	TG0666	-	PIN, EXPAN. 1/2" x 2-3/4"
23	120680	1	CHAIN, 3/8" SAFETY
24	TG0678	-	NUT, 1-1/2" HEX
25	003950	-	PIN, COTTER 3/16" x 2"
26	TG0662	1	CYLINDER, HYDRAULIC HITCH
27	220640	1	CLIP, FOUR HOSE
28	TG0226	1	TUBE WELDMNT, HITCH CROSS
29	TG0275	-	BOLT, 1-1/2" x 10-1/2" WELDED
30	TG0203	1	PIN WELD, CYLINDER, OUTER HITCH
31	TG0204	1	PIN WELD, CYLINDER, INNER HITCH
32	124340	-	PIN, COTTER 3/16" x 1-1/2"
33	TG0695	-	NUT, JAM 1-1/2", W/SET SCREW
34	033500	-	NUT, 5/16" HEX JAM
35	033510	-	SCREW, SQ HD SET, 5/16" x 3/4"

MODELS 1400 & 1600  
HITCH AND LEVELING  
ASSEMBLY

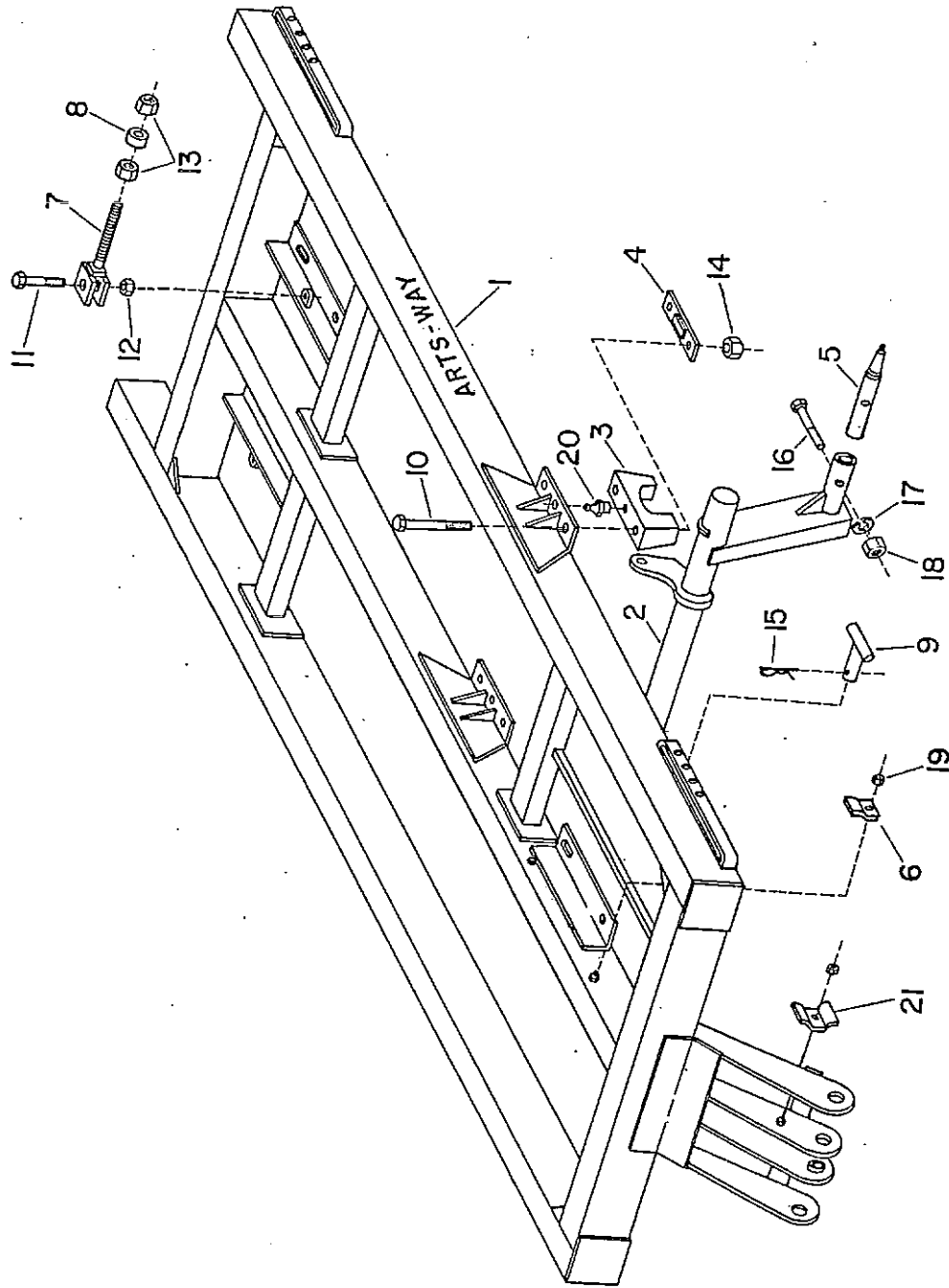




**MODELS 1400 & 1600  
HITCH AND LEVELING ASSEMBLY**

KEY	PART NO.	QTY.	DESCRIPTION
1	TG0224	1	HITCH WELDMENT
2	TG0102	1	COUPLER WELDMENT, HITCH
3	TG0055	1	PIN, HITCH SWIVEL
4	TG0665	1	JACK, HITCH
5	TG0255	2	ROD & YOKE WELDMENT, SPRING
6	TG0259	2	WASHER STOP, HITCH SPRING
7	TG0252	2	SPRING, COMPRESSION
8	TG0256	2	BUSHING, ADJUSTING ARM
9	TG0260	2	STOP WELDMENT, SPRING
10	TG0270	2	PIN, HITCH ARM SPRING SWIVEL
11	TG0271	2	SLEEVE, HITCH ARM SPRING SWIVEL
12	109970	2	CLIP, DOUBLE HOSE
13	E552044	-	NUT, 3/8" HEX LOCK
14	033570	-	FITTING, LONG 1/8"-27 NPT LUBE
15	TG0275	-	BOLT, 1-1/2" x 10-1/2" WELDED
16	TG0674	-	NUT, 1-1/2 HEX LOCK
17	013170	-	FITTING, 1/8"-27 NPT LUBE
18	TG0677	-	NUT, 1-1/2 HEX JAM
19	TG0672	-	BOLT, 1-1/4" x 4" HHCS
20	TG0675	-	NUT, 1-1/4 HEX LOCK
21	R61502	-	WASHER, 1-1/2" FLAT
22	TG0666	-	PIN, EXPAN 1/2" X 2-3/4"
23	120680	1	CHAIN, 3/8" SAFETY
24	TG0678	-	NUT, 1-1/2 HEX
25	003950	-	PIN, COTTER 3/16" X 2"

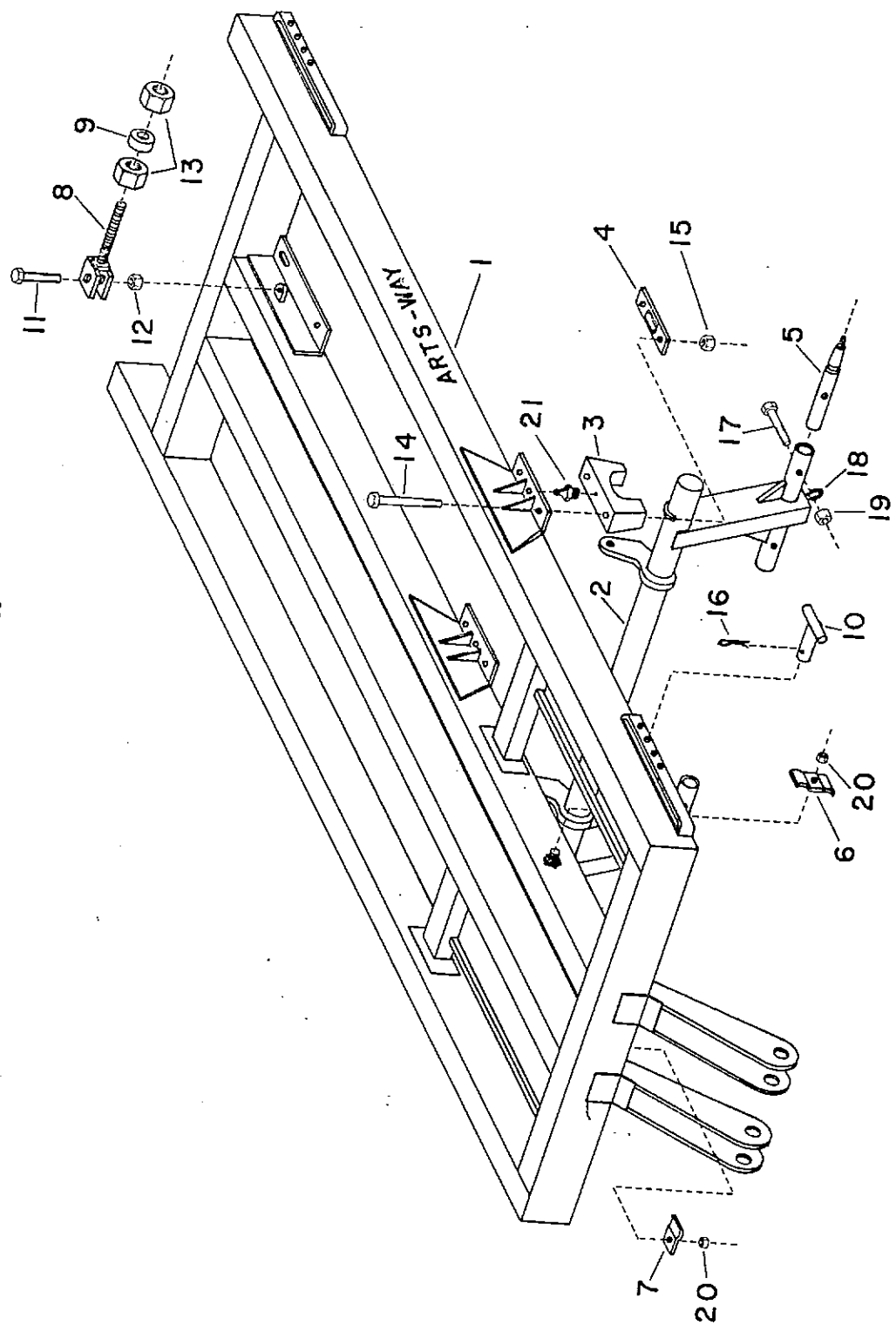
MODEL 950  
MAIN FRAME AND CARRIAGE ASSEMBLY



**MODEL 950  
MAIN FRAME AND CARRIAGE ASSEMBLY**

<u>KEY</u>	<u>PART NO.</u>	<u>QTY.</u>	<u>DESCRIPTION</u>
1	TG0239	1	FRAME WELDMENT
2	TG0471	1	CARRIAGE WELDMENT
3	TG0426	1	BLOCK, CARRIAGE PIVOT
4	TG0431	3	WEAR PLATE WELDMENT
5	TG0761	2	SPINDLE
6	218180	2	CLIP, SINGLE HOSE
7	TG0521	2	YOKE & ROD WELD, GANG ADJ.
8	TG0520	2	BUSHING, GANG ADJ.
9	TG0384	4	PIN WELDMENT, T-HANDLE
10	TG0694	-	BOLT, 1-1/4" x 12" HHCS
11	TG0679	-	BOLT, 1" x 4-1/2" HHCS
12	TG0680	-	NUT, 1" HEX LOCK
13	TG0676	-	NUT, 1-1/4" HEX JAM
14	TG0675	-	NUT, 1-1/4" HEX LOCK
15	035830	-	HAIRPIN, COTTER 3/16" x 3"
16	028330	-	BOLT, 5/8" x 4-1/2" HHCS
17	020440	-	WASHER, 5/8" LOCK
18	I124589	-	NUT, 5/8" HEX
19	E552044	-	NUT, 3/8" HEX LOCK
20	033570	-	FITTING, LONG 1/8"-27 NPT LUBE
21	109970	1	CLIP, DOUBLE HOSE

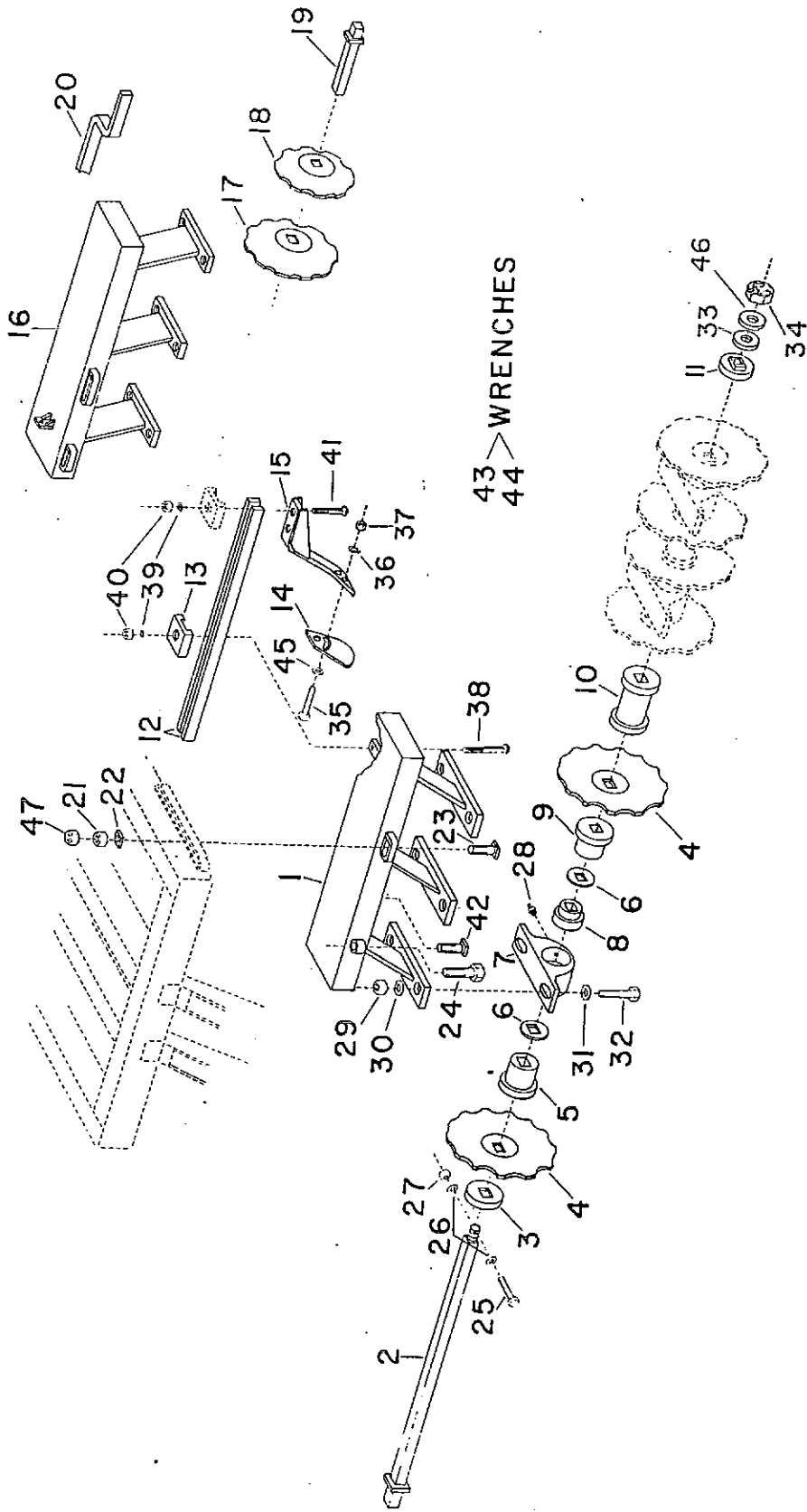
MODELS 1400 & 1600  
MAIN FRAME AND CARRIAGE ASSEMBLY



**MODELS 1400 & 1600  
MAIN FRAME AND CARRIAGE ASSEMBLY**

KEY	PART NO.	QTY.	DESCRIPTION
1	TG0389	1	FRAME WELDMENT
2	TG0470	1	CARRIAGE WELDMENT
3	TG0426	4	BLOCK, CARRIAGE PIVOT
4	TG0431	4	WEAR PLATE WELDMENT
5	TG0761	4	SPINDLE
6	109970	2	CLIP, DOUBLE HOSE
7	218180	2	CLIP, SINGLE HOSE
8	TG0521	2	YOKE & ROD WELD, GANG ADJ.
9	TG0520	2	BUSHING, GANG ADJ.
10	TG0384	4	PIN WELDMENT, T-HANDLE
11	TG0679	-	BOLT, 1" X 4.5" HHCS
12	TG0680	-	NUT, 1" HEX LOCK
13	TG0676	-	NUT, 1-1/4 HEX JAM
14	TG0694	-	BOLT, 1-1/4" x 12" HHCS
15	TG0675	-	NUT, 1-1/4 HEX LOCK
16	035830	-	HAIRPIN, COTTER 3/16" x 3"
17	028330	-	BOLT, 5/8" x 4.5" HHCS
18	020440	-	WASHER, 5/8" LOCK
19	I124589	-	NUT, 5/8" HEX
20	E552044	-	NUT, 3/8" HEX LOCK
21	033570	-	FITTING, LONG 1/8"-27 NPT LUBE

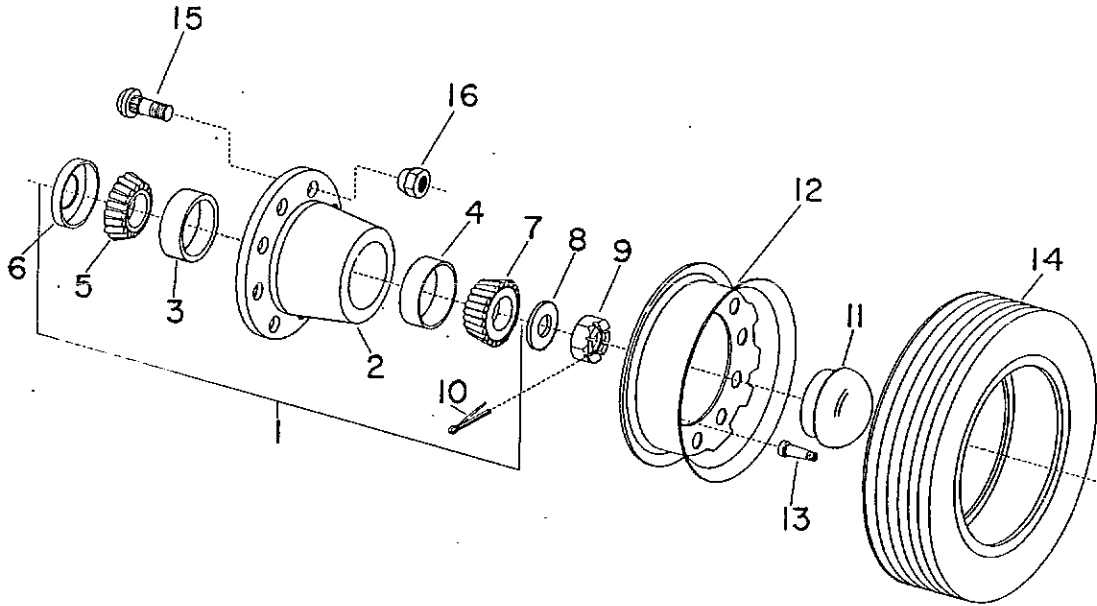
**GANG ASSEMBLIES  
MODELS 950, 1400, & 1600**



# GANG ASSEMBLIES MODELS 950, 1400, & 1600

KEY	PART NO.	950 QTY	1400 QTY	1600 QTY	DESCRIPTION
1	TG0605	1	-	-	GANG HANGER, LEFT FRONT 950
	TG0604	1	-	-	GANG HANGER, RIGHT FRONT 950
	TG0567	-	1	-	GANG HANGER, LEFT FRONT 1400
	TG0566	-	1	-	GANG HANGER, RIGHT FRONT 1400
	TG0630	-	-	1	GANG HANGER, LEFT FRONT 1600
	TG0629	-	-	1	GANG HANGER, RIGHT FRONT 1600
2	TG0783	2	-	-	SHAFT, 2-1/4" SQ X 49-1/2" WELDMENT
	TG0533	-	2	-	SHAFT, 2-1/4" SQ X 78-1/4" WELDMENT
	TG0537	-	-	2	SHAFT, 2-1/4" SQ X 92-5/8" WELDMENT
3	TG0590	4	4	4	CASTING, END CAP
4	TG0650	14	22	26	BLADE, 36" NOTCHED, STANDARD
	TG0653	14	22	26	BLADE, 36" NOTCHED, HARDFACED
5	TG0593	8	12	12	CASTING, HALF CONVEX
6	TG0436	16	24	24	SHIELD, DUST
7	TG0434	8	12	12	HOUSING, PILLOW BLOCK
8	TG0730	8	12	12	BEARING, 2-1/4" SQ SHAFT
9	TG0592	8	12	12	CASTING, HALF CONCAVE
10	TG0591	6	10	14	CASTING, FULL SPOOL
11	TG0542	4	4	4	END CAP WELDMENT
12	TG0539	4	-	-	BAR, FRONT SCRAPER SUPPORT 950
	TG0531	-	4	-	BAR, FRONT SCRAPER SUPPORT 1400
	TG0548	-	-	4	BAR, FRONT SCRAPER SUPPORT 1600
13	TG0538	44	62	72	CLEVIS, SCRAPER BAR
14	TG0657	16	24	28	BLADE, SCRAPER
	TG0656	2	2	2	BLADE, SCRAPER, 26" BLADE
15	TG0560	18	26	30	ARM, SCRAPER
16	TG0607	1	-	-	GANG HANGER, LEFT REAR 950
	TG0606	1	-	-	GANG HANGER, RIGHT REAR 950
	TG0569	-	1	-	GANG HANGER, LEFT REAR 1400
	TG0568	-	1	-	GANG HANGER, RIGHT REAR 1400
	TG0632	-	-	1	GANG HANGER, LEFT REAR 1600
	TG0631	-	-	1	GANG HANGER, RIGHT REAR 1600
17	TG0651	2	2	2	BLADE, 32" NOTCHED, STANDARD
	TG0654	2	2	2	BLADE, 32" NOTCHED, HARDFACED
18	TG0652	2	2	2	BLADE, 26" NOTCHED, STANDARD
19	TG0784	2	-	-	SHAFT, 2-1/4" SQ X 64-1/4" WELDMENT
	TG0537	-	2	-	SHAFT, 2-1/4" SQ X 92-5/8" WELDMENT
	TG0596	-	-	2	SHAFT, 2-1/4" SQ X 107-1/8" WELDMENT
20	TG0540	4	-	-	BAR, REAR SCRAPER SUPPORT 950
	TG0547	-	4	-	BAR, REAR SCRAPER SUPPORT 1400
	TG0549	-	-	4	BAR, REAR SCRAPER SUPPORT 1600
21	TG0678	-	-	-	NUT, 1-1/2" HEX
22	TG0561	-	-	-	WASHER, 3" SQ
23	TG0558	-	-	-	BOLT, 1-1/2" X 8-1/2" WELDED
24	TG0673	-	-	-	BOLT, 1-1/2" X 7" HHCS
25	991150	-	-	-	BOLT, 3/8" X 4" HHCS
26	I120394	-	-	-	WASHER, 3/8" FLAT
27	023060	-	-	-	NUT, 3/8" HEX LOCK
28	013170	-	-	-	FITTING, 1/8"-27 NPT GREASE
29	TG0680	-	-	-	NUT, 1" HEX LOCK
30	TG0692	-	-	-	WASHER, 1" TRIMMED
31	1107389	-	-	-	WASHER, 1" FLAT
32	TG0679	-	-	-	BOLT, 1" X 4-1/2" HHCS
33	TG0543	-	-	-	WASHER, 2-1/4" HARDENED
34	TG0670	-	-	-	NUT, 2-1/4" HEX SLOTTED
35	025100	-	-	-	BOLT, 5/8" X 1-3/4" HHCS
36	020440	-	-	-	WASHER, 5/8" LOCK
37	I124589	-	-	-	NUT, 5/8" HEX
38	218130	-	-	-	BOLT, 3/4" X 4-1/2" SNCB
39	036800	-	-	-	WASHER, 3/4" LOCK
40	036750	-	-	-	NUT, 3/4" HEX
41	218120	-	-	-	BOLT, 3/4" X 4" SNCB
42	TG0559	-	-	-	BOLT, 1-1/2" X 7-1/2" WELDED
43	TG0544	-	-	-	WRENCH, 2-1/4" OPEN END
44	TG0545	-	-	-	WRENCH, 3-1/2" BOX END
45	020430	-	-	-	WASHER, 5/8" FLAT
46	TG0546	-	-	-	WASHER, 2-1/4" FLAT
47	TG0677	AR	AR	AR	NUT, JAM 1-1/2"

TIRE, WHEEL, AND HUB ASSEMBLY  
 MODELS 950, 1400, & 1600

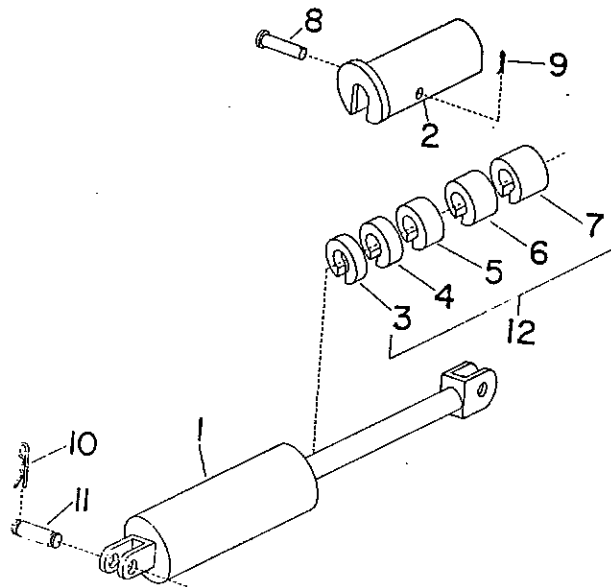


MODEL 950 USES 2 WHEEL ASSEMBLIES  
 MODELS 1400 & 1600 USE 4 WHEEL ASSEMBLIES EACH

KEY	PART NO.	QTY.	DESCRIPTION
1	TG0760	-	HUB ASSY, COMPLETE (INCLUDES 2,3,4,5,6,7,11,15 & 16)
2	TG0763	1	HUB, W/OUT CUPS
3	E072317	1	CUP, BEARING, (TMKN #3720)
4	I13324D	1	CUP, BEARING, (TMKN #2720)
5	E072316	1	CONE, BEARING, (TMKN #3780)
6	TG0770	1	SEAL, (C/R 25091)
7	E072319	1	CONE, BEARING, (TMKN #2790)
8	E829019	-	WASHER, 7/8" FLAT
9	129830	-	NUT, 7/8 HEX SLOTTED
10	026630	-	PIN, COTTER 5/32" x 1-1/2"
11	TG0769 129840	1	CAP, HUB
12	TG0750	1	WHEEL, W10L-16, 8-HOLE
13	164420	1	VALVE STEM W/CORE & CAP
14	TG0740	1	TIRE, 11.00 x 16 x 12 PLY
15	TG0766	-	BOLT, 9/16" STUD
16	TG0771	-	NUT, 9/16" WHEEL



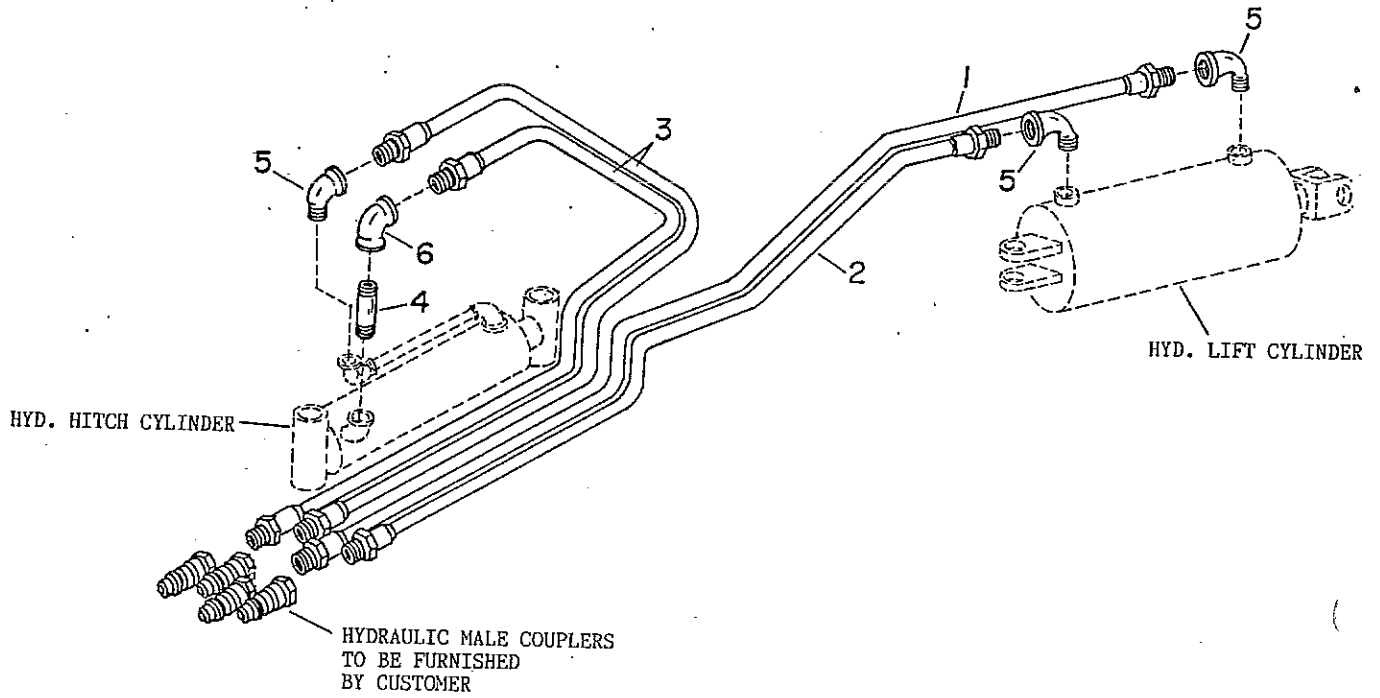
# HYDRAULIC CYLINDER AND STOPS MODELS 950, 1400, & 1600



MODEL 950 USES 1 HYD. CYLINDER  
MODELS 1400 & 1600 USE 2 HYD. CYLINDERS EACH

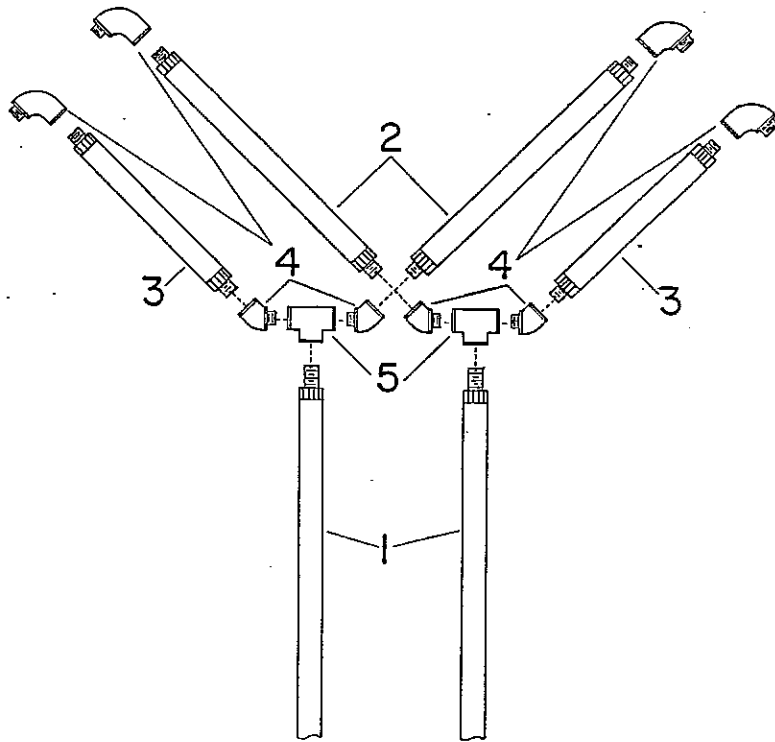
KEY	PART NO.	QTY.	DESCRIPTION
1	TG0658	1	HYDRAULIC CYLINDER, COMPLETE (INCLUDES 10 & 11)
	TG0659	-	IDENTIFY CYLINDER TO ORDER SEAL KIT
	TG0664	-	SEAL KIT, FOR BOBALEE INC. CYLINDER
2	TG0457	1	SEAL KIT, FOR HYD. UNLIMITED CYLINDER
3	TG0706	1	SLEEVE, TRANSPORT LOCK
4	TG0707	1	STOP COLLAR ASSY, 1"
5	TG0708	1	STOP COLLAR ASSY, 1-1/4"
6	TG0709	1	STOP COLLAR ASSY, 1-1/2"
7	TG0710	1	STOP COLLAR ASSY, 1-3/4"
8	155570	1	STOP COLLAR ASSY, 2.0"
9	E580035	1	PIN, CLEVIS 1/2" X 3-1/2"
10	035830	2	HAIRPIN, COTTER .120 x 2-3/8"
11	TG0661	2	HAIRPIN, COTTER 3/16" x 3"
12	TG0705	1	PIN, CYLINDER MOUNTING
			SET, STOP COLLARS, 1", 1-1/4", 1-1/2", 1-3/4" & 2.0"

# HYDRAULIC PLUMBING MODEL 950



KEY	PART NO.	QTY.	DESCRIPTION
1	045980	1	HYD HOSE 1/2" x 20'-6"
2	046090	1	HYD HOSE 1/2" x 20'-0"
3	166150	2	HOSE ASSY 1/2" x 168"
4	220630	1	NIPPLE, CLOSE 1/2" NPT x 3" LG
5	006240	3	1/2" x 90. STREET ELBOW
6	007440	1	1/2" x 1/2" x 90. ELBOW

HYDRAULIC PLUMBING  
MODELS 1400 & 1600



KEY	PART NO.	QTY.	DESCRIPTION
1	166150	2	HOSE ASSY, 1/2" x 168" 100R2AT
2	218170	2	HOSE ASSY, 1/2" x 78" 100R2AT
3	166130	2	HOSE ASSY, 1/2" x 66" 100R2AT
4	006240	8	STREET ELBOW, 1/2" x 90"
5	006320	2	TEE, 1/2" PIPE

